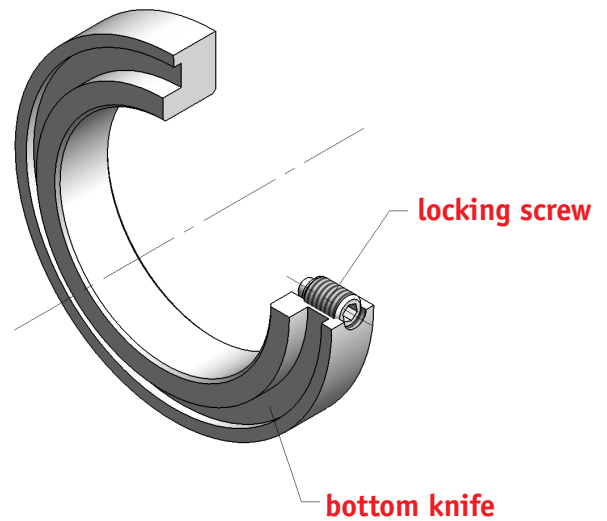
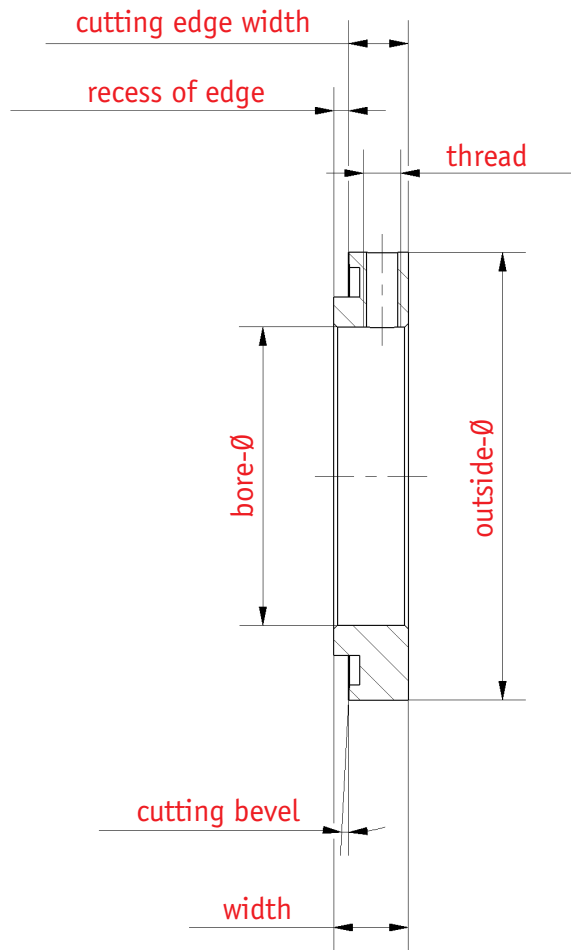


# SLITTING SYSTEM

## Bottom knife (female knife) type ND



→ with screw locking



<b>Outside-Ø</b>	46	50	60	77	80	90	105	130	130	150	160	210
<b>Bore-Ø</b>	25/30	25/30	30/40	45/60	60	60	80	80	100	120	100	180
<b>Width from</b>	8	8	8	8	8	8	8	10	10	10	10	10

**Order example:** Type – outside-Ø x bore-Ø x width / cutting edge width  
 – material group / cutting edge on one or both sides  
 ND – 105 x 80 x 10 / 8 of LWS

Standard cutting bevel: 3°  
 Standard widths and tolerance: 10 / 15 / 20 <sup>-0.02/-0.04</sup>  
 Standard material groups: LWS, HWS

**Special dimensions and special materials on demand**