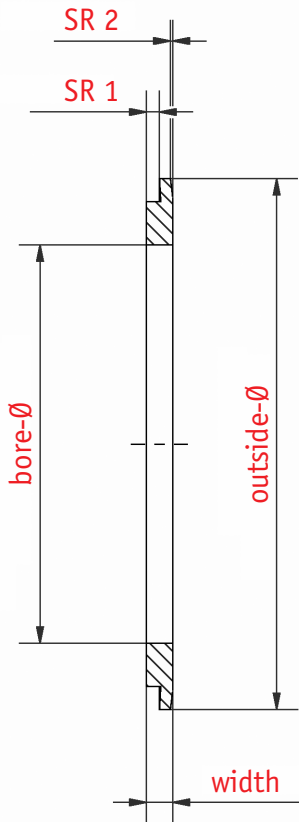


SLITTING SYSTEM

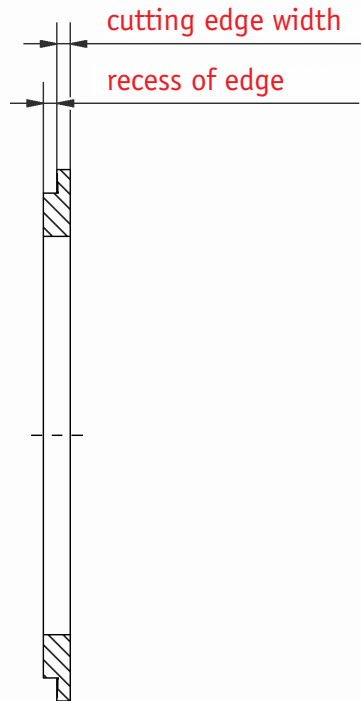
Bottom knife (female knife) type NSS



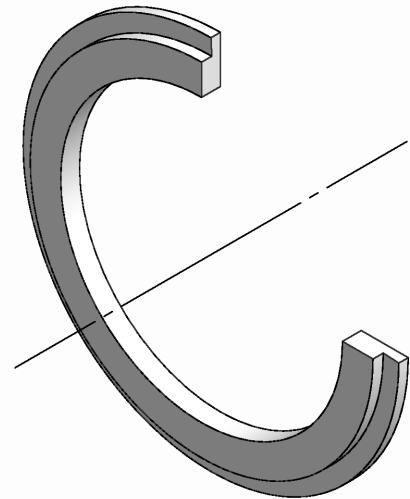
➔ for axial clamping (narrow cut system)



style A



style B



bottom knife

Outside-Ø	46	60	77	80						
Bore-Ø	30	40	45	60						
Width from	0.5	0.5	0.5	0.5						

Cutting edge height = Width – recess of edge / **recess of edge** style A = SR 1 + SR 2

Order example: Type – outside-Ø x bore-Ø x width / cutting edge width / style – material group

NSS – 46 x 30 x 1.0 / 0.5 / A of LWS

Standard cutting bevel: 1.5° with width ≤ 1.5 / 3° with width ≥ 1.5

Standard width tolerance: +/-0.005

Standard material groups: LWS, HWS

Special dimensions and special materials on demand